



25 Limestone Road, Chichester, PO20 2NL

£365,000 Freehold



3 Bedrooms



2 Bathrooms



1 Reception Room

SW

Sims Williams

Key Features

- Former Show Home
- Popular Indigo Park
- East Of Chichester
- Three Bedroom House
- Principal Bedroom Ensuite
- Stylish Kitchen/Dining Room
- Cloakroom
- Indian Sandstone Garden
- Two Private Parking Spaces

EPC Rating

Current = A

Potential = A

Council Tax Band

Band = D

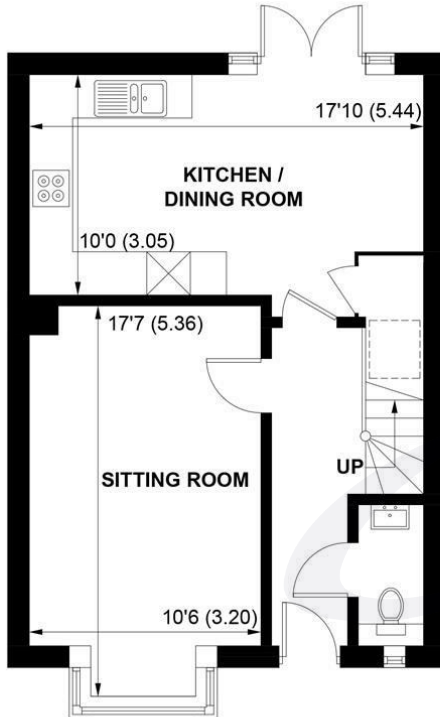
Tenure - Freehold

Estate Charges: £311.00 pa

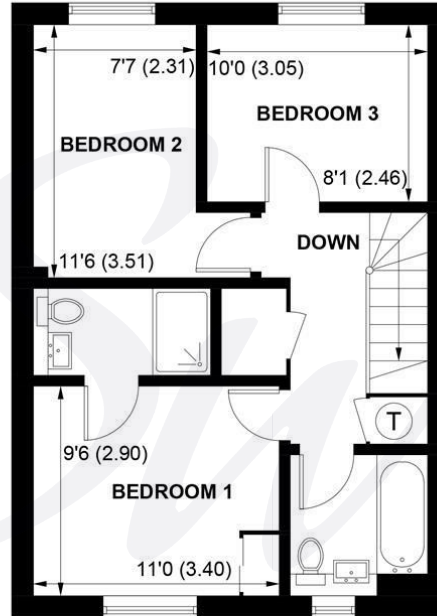




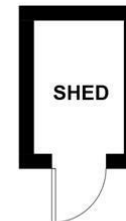
= REDUCED HEADROOM BELOW 1.5M / 5'0



GROUND FLOOR



FIRST FLOOR



(NOT SHOWN IN ACTUAL LOCATION / ORIENTATION)

APPROXIMATE GROSS INTERNAL AREA = 942 SQ FT / 87.5 SQ M

SHED = 25 SQ FT / 2.3 SQ M

TOTAL = 967 SQ FT / 89.8 SQ M

NOT TO SCALE (For illustrative purposes only as defined by RICS Code of Measuring Practice) 2026 ©

Produced for Sims Williams



simswilliams.co.uk

CHICHESTER

8-9 Southgate

Sales 01243 787868

Lettings 01243 836055

chichester@simswilliams.co.uk

WALBERTON

5 Maple Parade

Sales 01243 551368

Lettings 01243 836055

walberton@simswilliams.co.uk

ARUNDEL

8a High Street

Sales 01903 885678

Lettings 01903 881133

arundel@simswilliams.co.uk

BOGNOR REGIS

46 High Street

Sales 01243 862626

Lettings 01243 836055

bognor-regis@simswilliams.co.uk

Viewing Strictly by arrangement via the vendor's agent Sims Williams 01243 787868. These particulars are believed to be correct but their accuracy is not guaranteed and they do not form part of any contract.